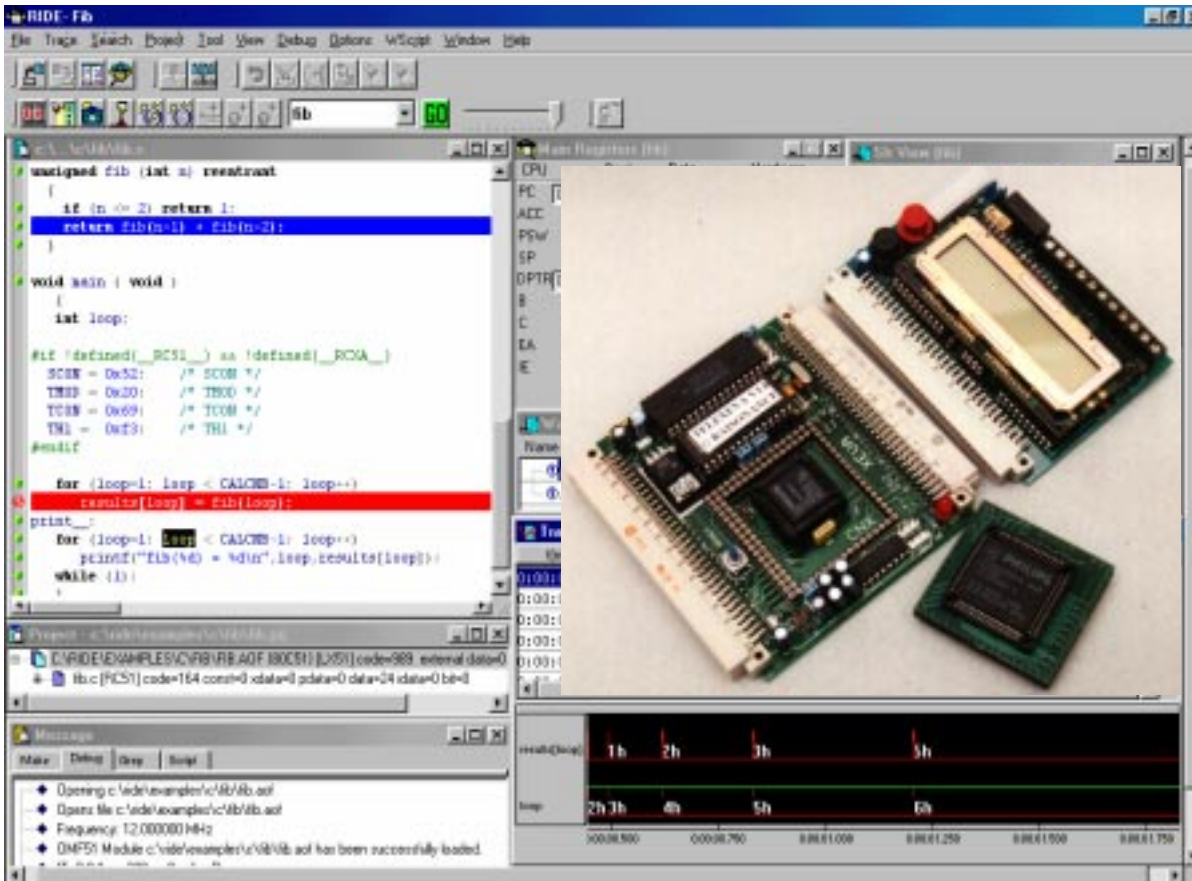


Discover-kit

The RAISONANCE Discover-kit is a complete kit with a hardware module and a software module including the full RKitLxx professional tools. The only limitation is the size of the generated code : 32 Kbytes (or 64Kbytes for XA) enough to meet the needs of education and small external ROM applications.



Presentation

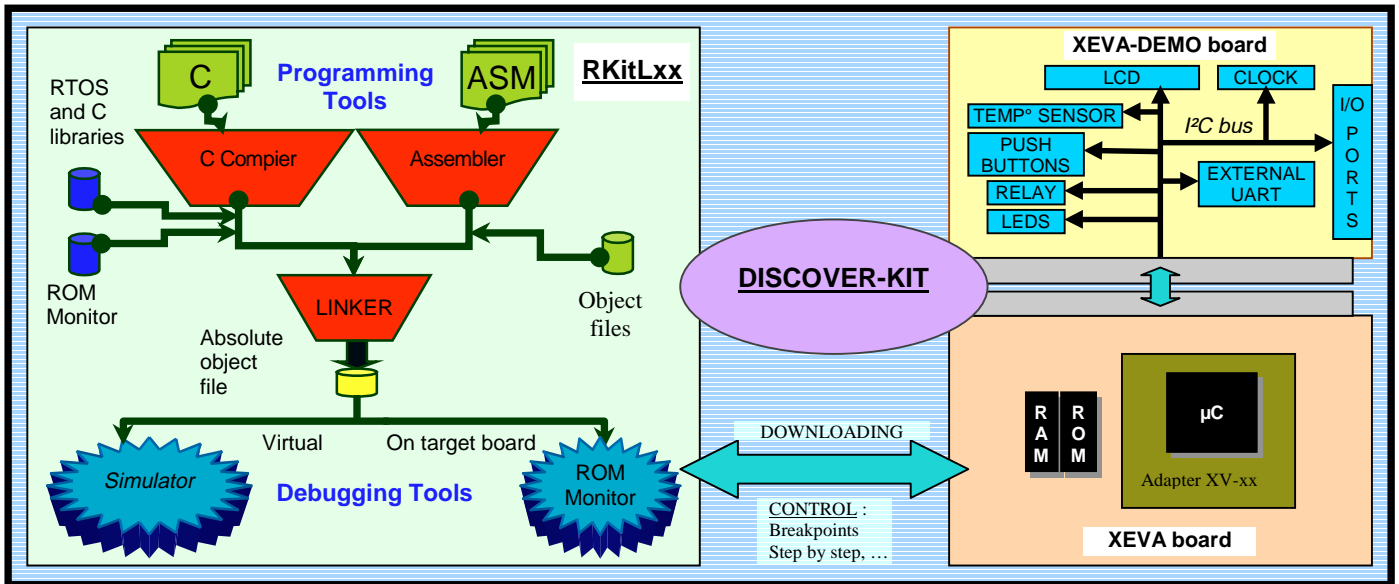
Discover-kit is a full set allowing to discover and to learn the development of embedded applications. It is well adapted to education since it integrates both software and hardware modules with all the necessary parts for apprenticeship. Indeed, from programming in a very friendly environment to the didactic debugging on target board, the discover is progressive and easy. The addition of the different elements of Discover-kit permits the user to begin developing his applications immediately.

Discover-kit includes :

- The RKitLxx software tools for Windows 95 and NT, dedicated to the chosen family (51 or XA) limited to 32 Kbytes (51) or 64 Kbytes (XA) of code;
- A development board XEVA supplied with a 80C32 (8051 family) or XEVA-FAST (4 layers) supplied with a 80C51XAG3 (XA family);
- An extension board XEVA-DEMO;
- A Eurocard rack (size = XEVA + XEVA-DEMO) ;
- A 9V supply and a serial cable;
- An adapter for the used component if needed (XV-XAG3 for the XA family).



RAISONANCE



RKitLxx : software tools

Discover-kit includes RKitLxx software development tools corresponding to the chosen microcontroller family (51, XA or 251) : very optimizing ANSI-C Compiler, ASM-51 Assembler, Linker, RTOS, ROM Monitor for debugging on target board and multi-processor Simulator.

All these tools are identical to the professional tools with only a limitation of the generated code (32 or 64 Kbytes). This leaves a wide margin to develop mini-projects or projects dedicated to education.

The RIDE Integrated Development Environment (IDE) manages all the software tools allowing to develop applications, from programming to debugging, always staying in the same environment. Moreover, examples for each tool are available from RIDE. For more information consult the specific Rkit-xx documentation.

Debugging

Simulator

The Simulator is totally integrated in the RIDE interface. It takes into account the characteristics of the selected component and simulates in details the different peripherals. Associated to RIDE, the Simulator allows to simulate multi-processor applications and external inputs/outputs.

ROM Monitor

The ROM Monitor allows to debug in ROMless mode directly on target boards. It uses the same interface as the Simulator. The ROM Monitor is downloaded at the same time as the program code. Connection with the PC is made by the serial link. The ROM Monitor is fully managed by RIDE (under Windows 95 and NT). It permits simple commands like « step by step » execution. With the XEVA board, which gets the modifiable code possibility, advanced functionalities are possible like « line by line » or dynamic code breakpoints. Then, the ROM Monitor connected to the XEVA board constitutes a low-cost debugging solution but powerful and friendly.

Development board XEVA

XEVA is a universal board designed to evaluate microcontrollers and to be integrated in industrial applications (OEM). It features :

- Interchangeability of the processor: adapters available for almost all 805 and XA derivatives.
- Extensions : two 96-pin connectors connectable to wrapping extensions boards or specific application board such as XEVA-DEMO.
- Memory space : 128kb RAM and EPROM; the decoding logic is performed by a reprogrammable PLD.
- Power supply : either regulated 5V or rectified 9V external suppliers.
- Quartz 12 MHz (14,7456 for XA) which can be changed.
- Two RS-232-C ports.

Extension board XEVA-DEMO

It provides a wide range of peripherals such as push buttons (2), LCD (2x16 characters), LEDs (8), relay (1), temperature sensor (1), I²C peripherals (PIO, RTC...).

Moreover, an UART-IC permits to debug within the ROM monitor, without using the internal UART of the microcontroller.

Accessories (option)

With the standard XEVA board, all the microcontrollers of the 8051 family in PLCC 44 package are useable for the Discover-kit. The other ones are taken into account by adding specific adapters for a very low cost.

Distributor :

RAISONANCE

755, avenue Ambroise Croizat
38920 CROLLES FRANCE

Tel. : (+33) 4 76 08 18 16 Fax : (+33) 4 76 08 09 97

email: info@raisonance.fr

www: <http://www.raisonance.fr>