

Entrenador de microcontroladores 8051, AMS EZ-MICRO Tutor-51



Características Hardware

- Motorola/Intel CPU
- 32K RAM
- 32K EPROM
- 8 Channel A/D
- 1 Channel D/A
- 2 x 16LCD Display
- 4x4 Keypad
- 4 Input Sensing Switch
- 4 Digital Inputs
- 4 Digital Outputs
- Serial Port
- Built-in Monitor

El pack incluye

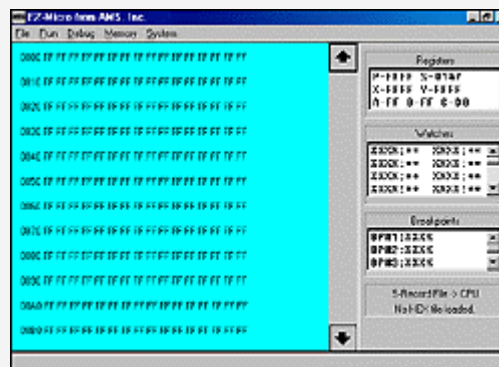
- Windows 95/98, ME, NT, 2000, XP Compatible Manager Software
- Built-in Editor
- Built-in Assembler
- 400+ Page Student Workbook
- Instructor Manual includes answers to all exercises
- Expansion Connector for Wire-wrap and other Project Board
- Hundreds of Hardware and Software Exercises
- 1 año de garantía
- 'C' Compiler (Optional)

EZ-Micro Tutor series of courseware from AMS is the first and only complete microprocessor, microcontroller design courses available to community colleges, vocational colleges and universities. All the courses are a complete and affordable way to integrate into any engineering curriculum or it can be used for in-house training.

- **EZ-Micro Tutor main tutorial boards** from AMS use the Motorola and Intel microprocessor. They all include monitor EPROM, RAM, serial interface to IBM compatible PC and expansion bus connector.
- **The monitor EPROM** serves two important functions: It allows students to communicate with the CPU via a serial interface, and it also works as a boot EPROM, which brings the microprocessor up to a predetermined stage after the power-on sequence.
- **The 32k bytes of RAM** on the main board are used to store the user's program and data variables. The main board also has a serial interface to IBM compatible personal computers. This serial interface allows the user to download commands and programs to main board RAM.
- **The expansion bus connector** on the main board is very important, because it allows the student to connect to lab projects. The student can design his or her own lab project and connect it to the main microprocessor board using wire-wrap board. The additional lab project board allows the student to learn hardware design, as well as software design.

Software

- The most important item for any computer-assisted teaching tool is the software. The EZ-MICRO manager software is compatible with Windows 95/98, ME, NT, 2000, XP and is designed to be very easy to use. The pull-down menus, dialog box interface and on-line context-sensitive help are the features that make it easy-to-use software. The user can create/edit source code, assemble and download the file from manager software



Workbook

- The workbook contains detailed explanations of theory and also includes different lab projects for students to complete. Each chapter ends with questions and suggested lab projects.
- The EZ-MICRO COURSEWARE book is an integrated curriculum that has a student version and instructor's version of the workbook. The workbook contains exactly what you need to know to make complex subjects easy-to-learn.
- The instructor workbook includes the answers to all the questions, provides the schematic designs of all the hardware lab projects and has a software listing of all the software lab projects.